



DUBAI CREEK HARBOUR

# CREEK BEACH

---

LOTUS

EMAAR



# THE WORLD OF TOMORROW

Dubai Creek Harbour is at the heart of our bold new vision for Dubai. The eight square kilometre waterfront destination is bound to push the frontiers of architecture, design and quality of life.



10 Mins from  
Burj Khalifa



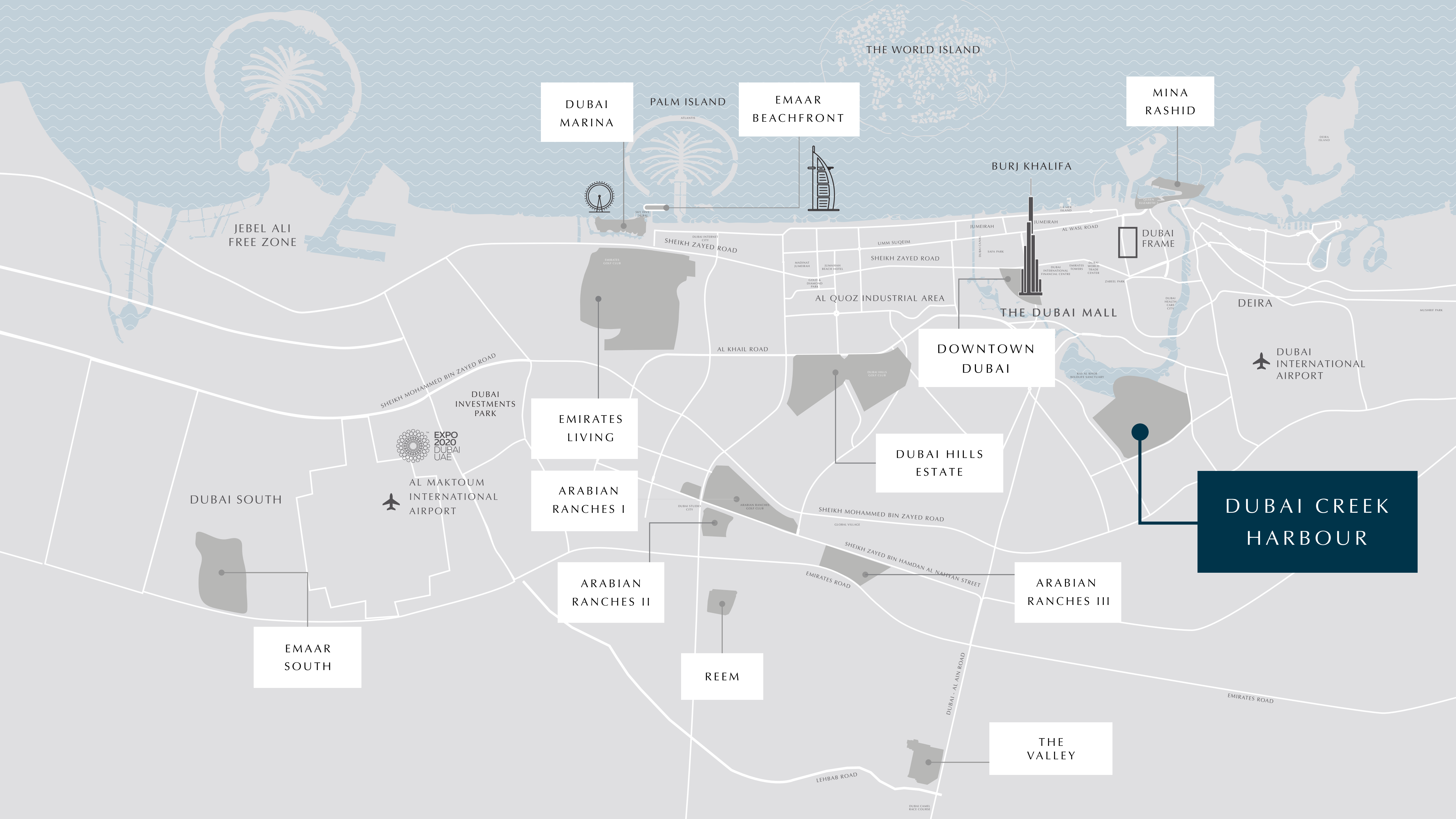
15 Mins from  
Dubai Int'l Airport



Wildlife Sanctuary  
Home of Pink Flamingos







DUBAI MARINA

PALM ISLAND

EMAAR BEACHFRONT

THE WORLD ISLAND

MINA RASHID

JEBEL ALI FREE ZONE

BURJ KHALIFA

DUBAI FRAME

SHEIKH ZAYED ROAD

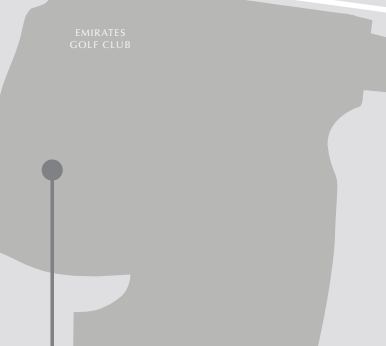
UMM SUQEIM

SHEIKH ZAYED ROAD

JUMEIRAH

AL WASH ROAD

DEIRA



MADINAT JUMEIRAH

JUMEIRAH BEACH HOTEL

GOLD & DIAMOND PARK

THE DUBAI MALL



SAFA PARK

DUBAI INTERNATIONAL TOWERS

EMIRATES FINANCIAL CENTRE

EMIRATES WORLD TRADE CENTER

ZABEL PARK

DUBAI HEALTH CARE CITY

RAS AL KHOR WILDLIFE SANCTUARY

DUBAI INTERNATIONAL AIRPORT

DOWNTOWN DUBAI

SHEIKH MOHAMMED BIN ZAYED ROAD

DUBAI INVESTMENTS PARK

EMIRATES LIVING

AL KHAIL ROAD

DUBAI HILLS ESTATE



AL MAKTOUM INTERNATIONAL AIRPORT

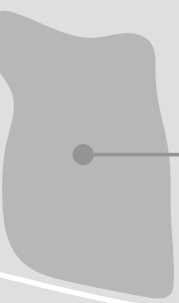
ARABIAN RANCHES I

DUBAI HILLS GOLF CLUB

SHEIKH MOHAMMED BIN ZAYED ROAD

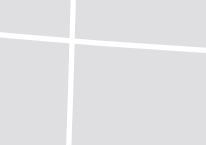
DUBAI CREEK HARBOUR

DUBAI SOUTH



EMAAR SOUTH

ARABIAN RANCHES II



GLOBAL VILLAGE

SHEIKH ZAYED BIN HAMDAN AL NAHYAN STREET

ARABIAN RANCHES III

REEM

EMIRATES ROAD

DUBAI - AL AIN ROAD

THE VALLEY

LEHBAB ROAD

EMIRATES ROAD

DUBAI CAMEL RACE COURSE



# CREEK BEACH

## Where The City Meets The Beach

Creek Beach is Dubai's first-of-its-kind urban beach in the middle of Dubai Creek Harbour. Located along the historic Dubai Creek, Creek Beach is conceived to afford you the ultimate family-friendly retreat.

From 700 metres of pristine white sands to the infinity pool and spectacular sunset views, this is paradise reborn.







Dubai Creek Harbour

# LOTUS AT CREEK BEACH

## A Sense Of Belonging

Lotus is a place designed to enhance your life and expand it far beyond the confined walls of your home. From a shared sense of belonging, connecting, playing and relaxing, this warm and welcoming residential cluster turns into a living organism: a community.







Location

# THE CITY ON YOUR DOORSTEP

Boasting an enviable location just minutes away from Dubai's most exciting places, Lotus offers residents the best of urban living in a scenic destination.



Breathtaking Sunset Views



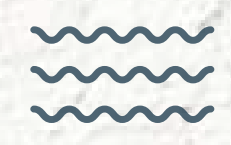
5 Mins from Creek Marina Yacht Club



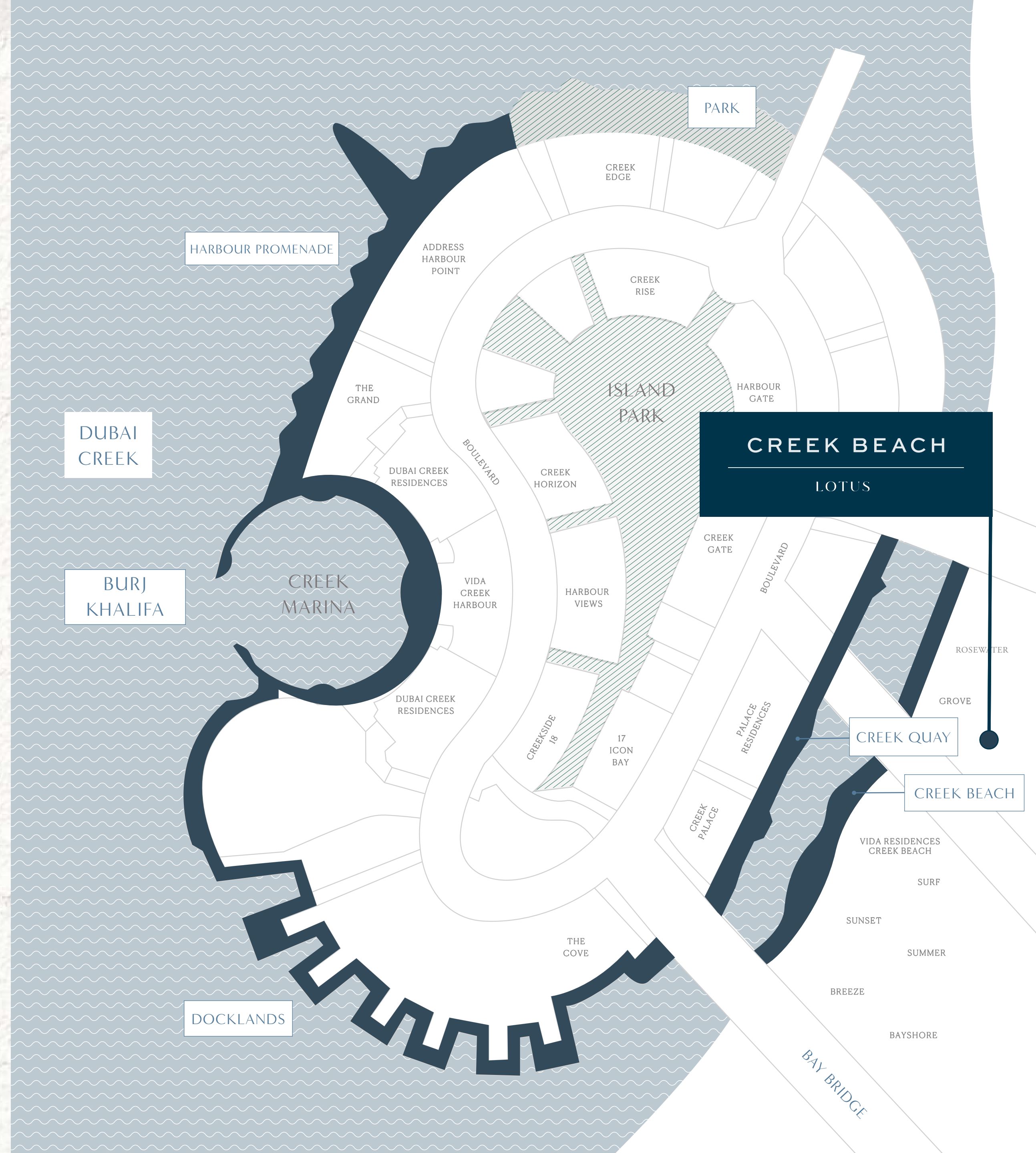
Licensed Bars & Restaurants



Dining at the Waterfront Vida Hotel



Proximity to a 700-Metre Beach







## AN URBAN OASIS

In the heart of the idyllic Creek Beach, the four stylish apartment buildings are located around an inner plaza buzzing with life where residents can come together, share moments, and make memories.

This impressive contemporary development in such a desirable location is destined to be nothing less than an urban oasis.







Lotus at Creek Beach

# CONVENIENTLY CONNECTED

Lotus is located minutes away from the pristine Creek Beach, where you can enjoy the serenity of the natural surroundings.

It is also conveniently close to all primary business, shopping and entertainment destinations in Dubai, so you'll find peace at home without being too far from all the action. The artful balance between work and life is struck in the harmony of Lotus.





# AN EXCITING NEIGHBOURHOOD

Lotus is brimming with life, and positive energy. By enhancing a social life in a tight-knit community, this family-friendly residential cluster inspires a life of joy and harmony. The surrounding prominent amenities, combined with the incredible location, promise a future of prosperity and spectacular quality of life.









Interiors

## OPTIMISED QUALITY OF LIFE

Lotus offers a wide variety of stunning 1, 2 & 3-bedroom residences with an exquisite atmosphere of contemporary interior inviting residents to relax and spend quality time with family and friends.

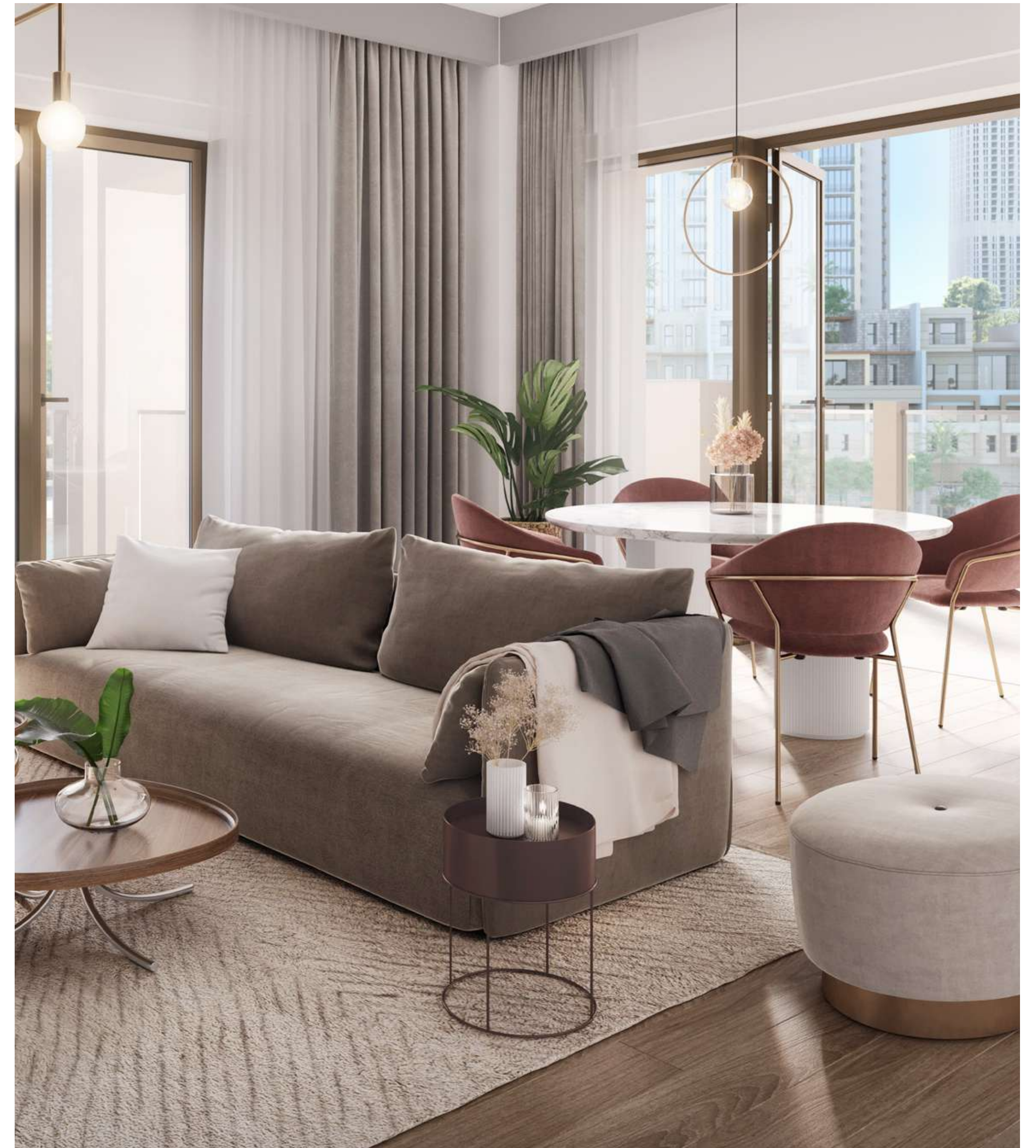
Carefully considered interiors have been selected to optimise convenience and quality of life, creating a stylish, living space that is perfect for relaxing.



# CURATED MODERN LIFESTYLE

Each residence has been conceived specifically to respond to the demands of a modern urban lifestyle.

Featuring expansive windows and balconies with abundant natural light, the contemporary design combines stylish architecture and high-quality materials to deliver homes that balance sophisticated style with everyday functionality.











# LIFE-ENHANCING AMENITIES

Created to encourage long strolls along the streets of Creek Beach, Lotus boasts an array of amenities right at your doorstep. From happy days cooling off in the shimmering pool, to active afternoons at the playground with the little ones, every day is a new adventure.



Community Pool  
& Kids Pool\*



Barbecue  
Facilities



Fully-Equipped  
Gym\*



Multi-Purpose  
Room



Town  
Centre



Outdoor  
Play Area



# GLOBAL LIFESTYLE DEVELOPER

An undisputed leader in the global real estate market, Emaar has grown over the years to become the largest real estate developer outside of mainland China. You will be investing with one of the most respected brands in the world.

NET PROFIT	REVENUE	MARKET CAP
AED	AED	AED
3.8BN	28.27BN	40BN

AS OF 31 DECEMBER 2021

RESIDENTIAL UNITS DELIVERED	RESIDENTIAL UNITS UNDER DEVELOPMENT
81,600+	35,200+





# CONTACT US

For more information on LOTUS in DUBAI CREEK HARBOUR,  
please call 800 36227 (UAE) / +971 4 366 1688 (International)  
or talk to our Property Advisor directly at +971 4888 8844 from 9 AM to 7 PM (GST), Monday to Friday.  
Visit our online sales centre at [emaar.com](http://emaar.com) or any of our Sales Centres across the UAE.

## DUBAI

Emaar Sales Centre | Downtown Dubai

9:30 AM to 10 PM, Sunday - Friday | From 9:30 AM to 7PM, Saturday

Dubai Hills Estate Sales Pavilion | Umm Suqeim Road

Dubai Creek Harbour Sales Pavilion | Ras Al Khor

9:30 AM to 7 PM, Sunday - Saturday

## ABU DHABI

Emaar Sales Centre | Al Nahda Tower, Ground Floor, 4th Street, Corniche, Al Muroor Road

9:30 AM to 7 PM, Sunday - Friday | Closed, Saturday

# EMAAR